



# **MD Picture Process Maps - Salvage**

## **MD Manual Tie Baler Operation**

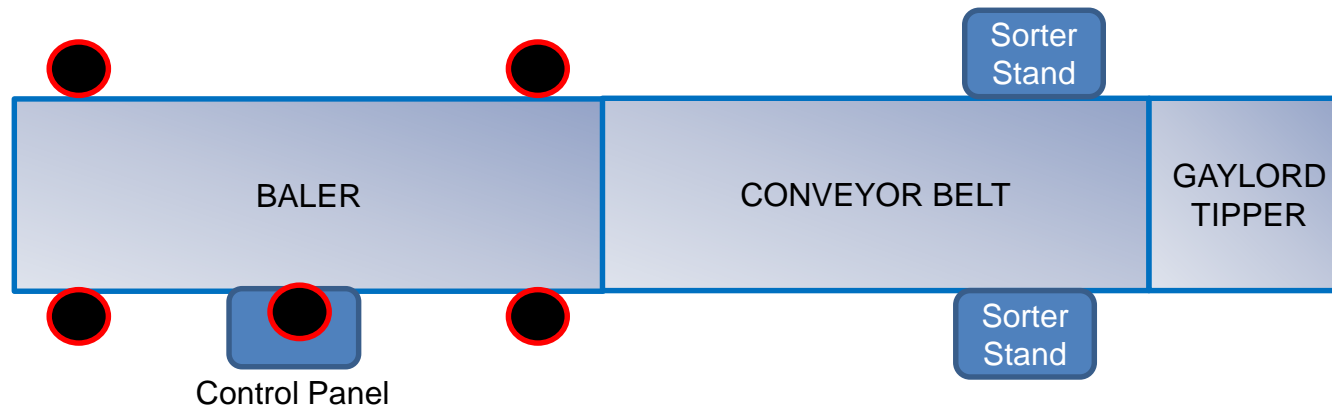
## Required Tools and Materials

- Daily Checklist
- Key

The Manual Tie Baler consists of three pieces:

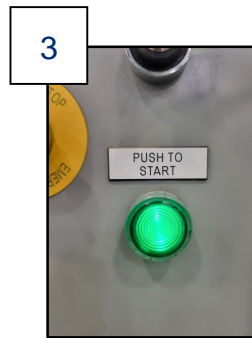
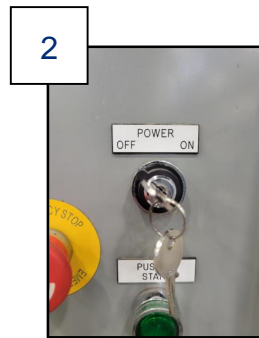
- ✓ **Gaylord Tipper:** Tips the Gaylord to deposit items onto the Conveyor Belt
- ✓ **Conveyor Belt:** The product moves across the Conveyor Belt, heading toward the Baler. While on the Conveyor Belt, items can be sorted, and inappropriate items are removed.
- ✓ **Baler:** The Baler compacts the product so that it can be bound together with baling wire.

There are **FIVE Emergency Shut Off buttons** indicated by: ●



# Baler Start Up

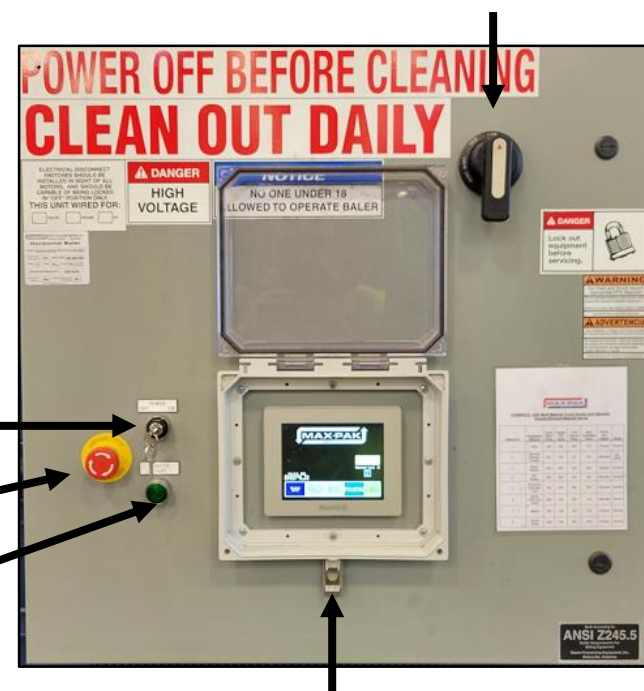
1. Turn the **Baler Toggle Switch** *On* (90° Counter Clockwise)
2. Turn the **Baler Key** to *On* (This turns on the Information Screen)
3. Press the **Auto On** button to start the Baler



The stack light flashes orange while the Baler is in operation.



1. Baler Toggle Switch



2. Baler Key

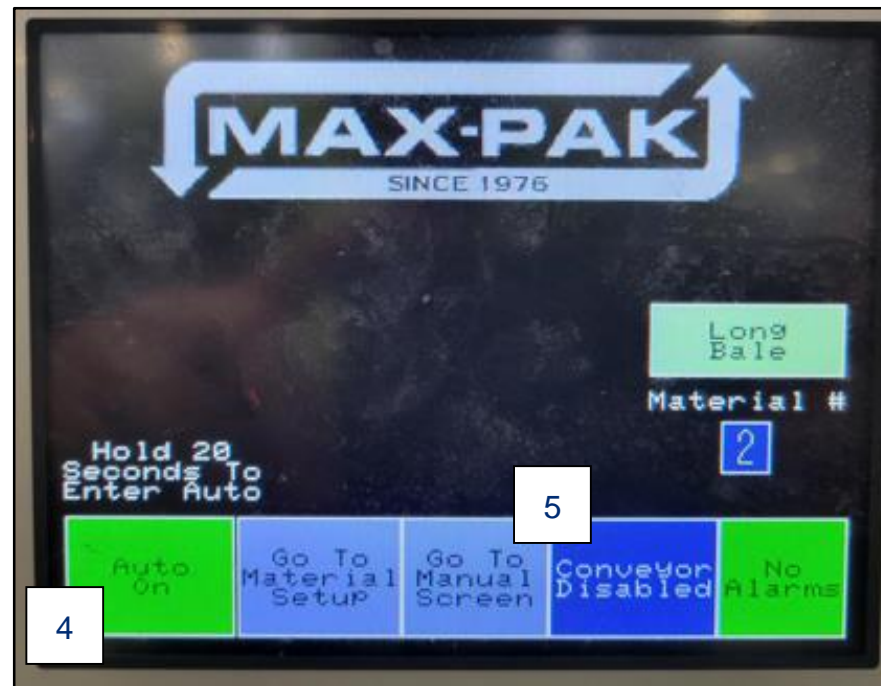
Emergency Stop

3. Push to Start button

Information screen

From the Information Screen:

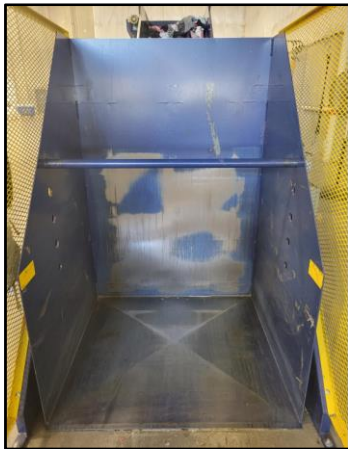
4. Press and hold the **Auto On** button for 20 seconds and wait for the motor to turn on.
5. Press the **Conveyor Disabled** button to enable the conveyor. The Baler should already be set to *Long Bale*.



# Loading The Product

**NOTE:**

Before loading, ensure  
the Tipper is empty.



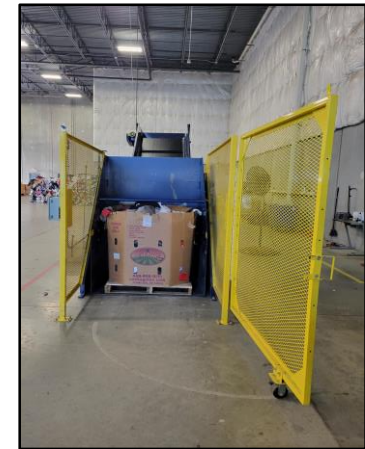
1



1. With a Pallet Jack, place the  
Gaylord of product into the Tipper.

**NOTE:**

Both the Gaylord and  
Pallet remain in the Tipper.



# Loading The Product

2. Close the gate and latch the **Catch Pin** to the Tipper.
3. Press the button to allow the **Foot Pedal** to be used.
4. Use the **Foot Pedal** on the step to raise and lower the Tipper to dump the product onto the belt.

## Example Items That Need To Be Removed During Sorting:

- Stuffed animals
- Shoes
- Hangers
- Plastic/plastic bags
- Other non-cloth items

## While Sorting:

The Baler will automatically compress the bale with the Ram (compression from the back towards the door) and Stamper (compression from the top down).



## SAFETY ALERT:

DO NOT add any step, box, or other items to the sorting stands to aid in use or to use for decoration.



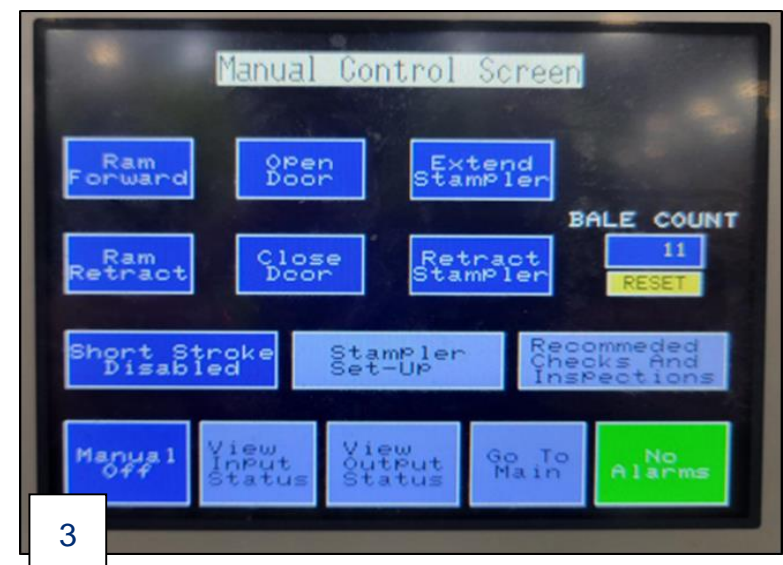
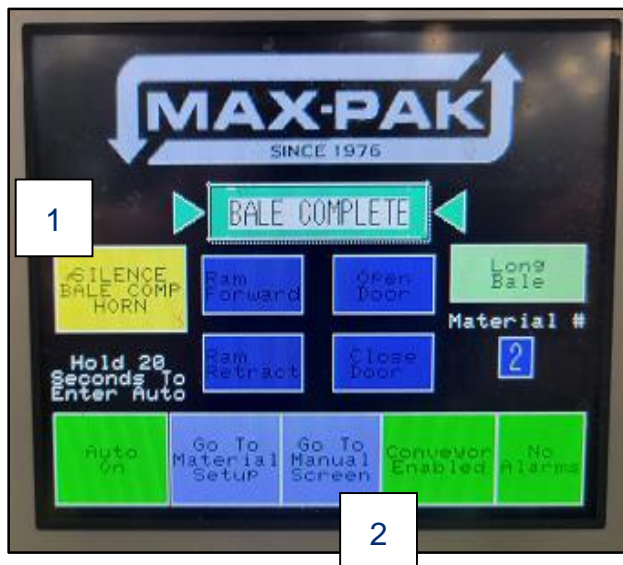
# Baling Completion

From the Bale Complete Screen:

1. When the alarm sounds that a bale is complete, silence the alarm by pressing the **Silence Bale Comp Horn** button and then follow the steps for tying the bale.
2. Turn off the conveyor by pressing the **Conveyor Enabled** button, turning it blue.

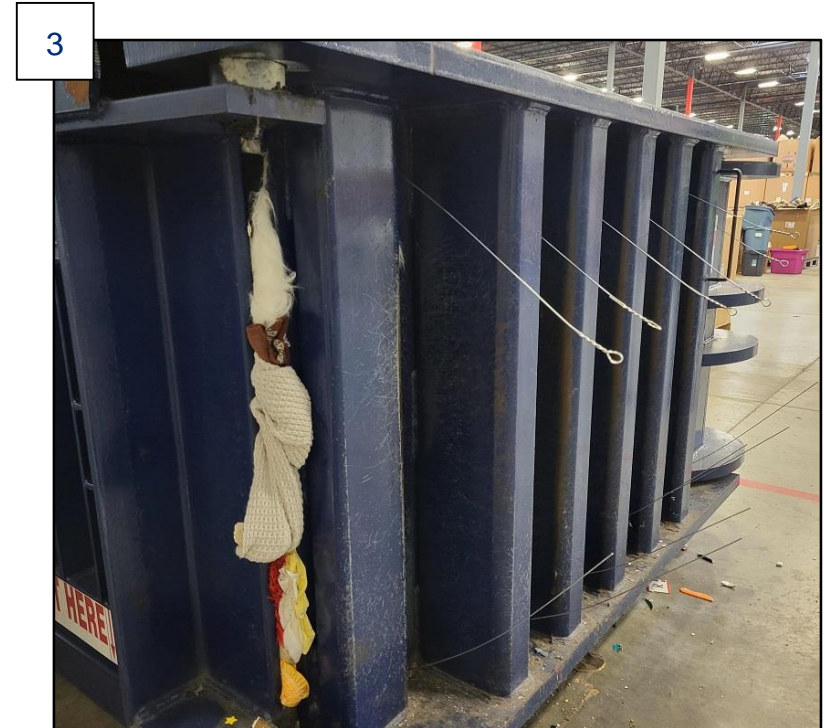
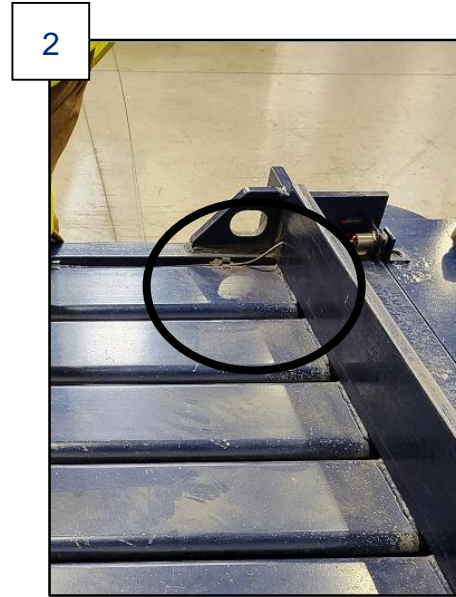
From the Manual Control Screen:

3. Press the **Manual Off** button and wait until you hear the Baler turn back on in manual mode.



# Tying The Bale

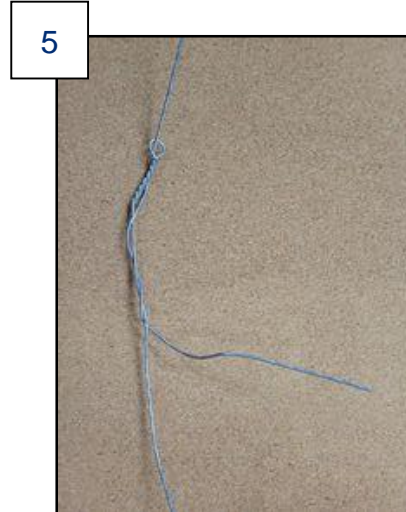
1. Push the baling wire down the back of the bale. The wire will go down the back and out front through the bottom.
2. Insert the looped end of the baling wire through the front.
3. Once you've inserted the wires, it will look like this from the front of the Baler.





# Tying The Bale

4. From the front, grab the looped end of a bale wire, then take the straight end and put it through the loop. Using your body strength, pull the straight wire as tight as possible
5. When you have pulled it as tight as possible, wrap the straight end of the wire around the looped end of the wire at least three times. Wrap the remaining end of the wire around the back side of the wire to keep the end of the wire from sticking out and hurting someone during transport.

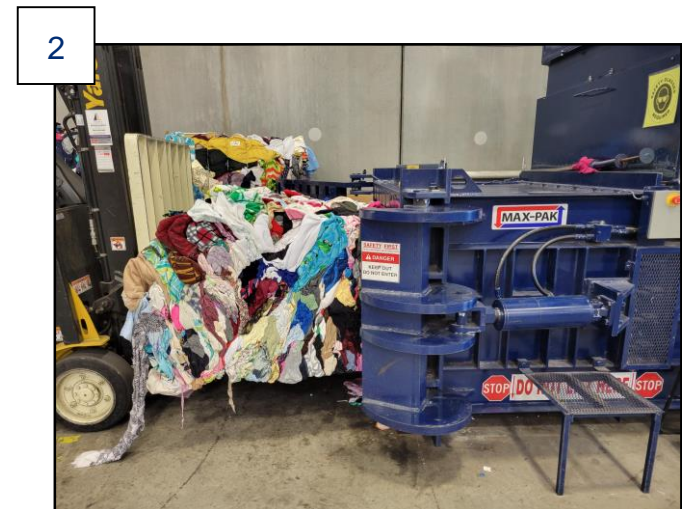
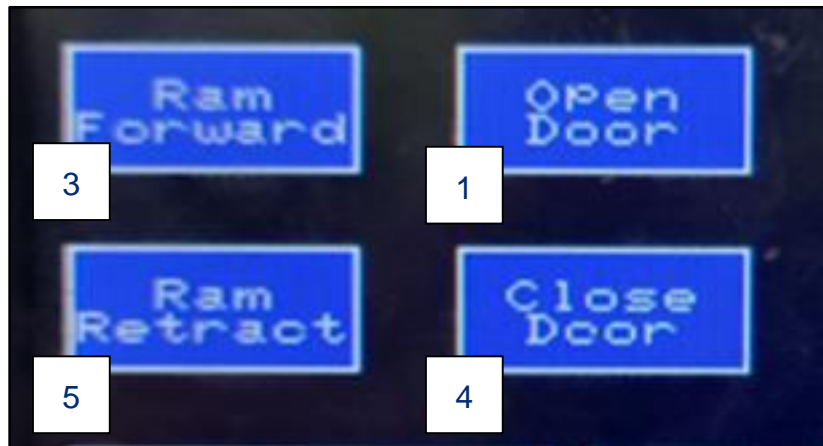


(Fully tied bale with the door open)

# Removing The Bale

From the Manual Control Screen:

1. Press the **Open Door** button to open the door.
2. Once the door is opened, allow the forklift to line up bale in the opening.
3. When the forklift is in place, press the **Ram Forward** button until the bale is completely out of the Baler.
4. After the forklift drives away, ensure everyone is clear and press the **Close Door** button.
5. Press the **Ram Retract** button to retract the Ram.



# Weighing The Bale

Weighing and documenting the bale:

1. Place the bale on the scale.
2. Each bale should weigh between 1000 and 1350 lbs.
3. Complete the “Recyclables Shipping Report” with the date and weight.

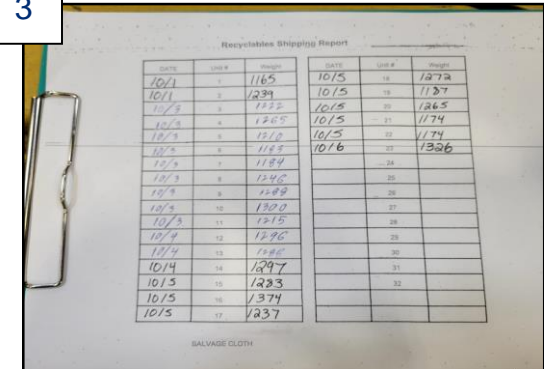
1



2



3



| Recyclables Shipping Report |        |      |        |
|-----------------------------|--------|------|--------|
| DATE                        | WEIGHT | DATE | WEIGHT |
| 10/1                        | 1165   | 10/5 | 1272   |
| 10/1                        | 1234   | 10/5 | 1287   |
| 10/3                        | 1252   | 10/5 | 1265   |
| 10/3                        | 1265   | 10/5 | 1174   |
| 10/3                        | 1210   | 10/5 | 1174   |
| 10/3                        | 1188   | 10/6 | 1326   |
| 10/3                        | 1184   |      |        |
| 10/3                        | 1240   |      |        |
| 10/3                        | 1288   |      |        |
| 10/3                        | 1300   |      |        |
| 10/3                        | 1215   |      |        |
| 10/4                        | 1290   |      |        |
| 10/4                        | 1280   |      |        |
| 10/4                        | 1297   |      |        |
| 10/5                        | 1223   |      |        |
| 10/5                        | 1374   |      |        |
| 10/5                        | 1237   |      |        |

SALVAGE CLOTH

Shut down, if applicable:

1. Press the **Auto On** button to shut off the Baler.
2. Turn the **Baler Key** to *Off*
3. Turn the **Baler Toggle Switch** to *Off* (90° clockwise).

