

# Picture Process Maps (PPM)

## Shredder

### **PURPOSE**

The Picture Process Maps (PPM) for the HSM ProfiPack P425 Shredder and Grizzly Model G8027 1 HP Dust Catcher are designed to visually document and guide the operational procedures for eCommerce department team members, enhancing training and operational consistency. These maps provide step-by-step instructions for activation, shutdown, and operation procedures. They are essential tools for maintaining equipment in optimal condition, reducing workplace accidents, and promoting a standardized approach to cardboard processing.

### **MACHINE INFORMATION**

#### **Shredder**

Model: HSM ProfiPack P425

The HSM ProfiPack P425 is a cardboard shredder. It's designed to repurpose used cardboard boxes into packaging material.

#### **Dust Catcher**

Model: Grizzly Model G8027 1 HP Dust Collector

The Grizzly Model G8027 1 HP Dust collector is used for collecting and filtering sawdust and fine particles to maintain a cleaner work environment.

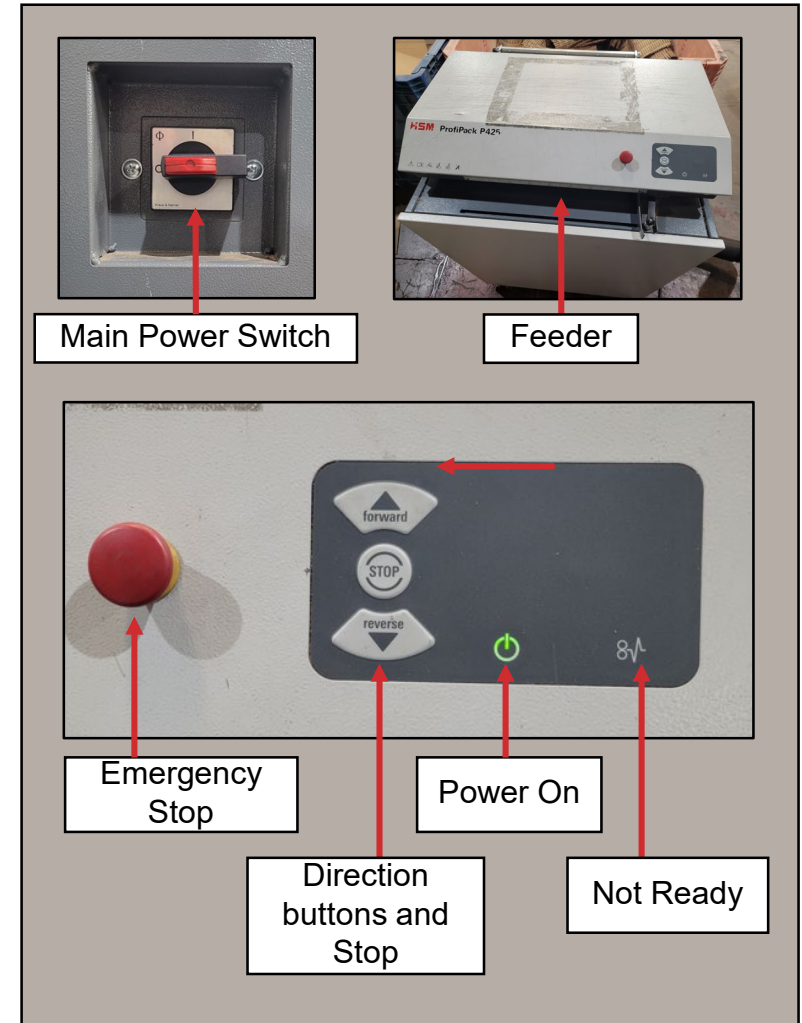
# Shredder and Dust Catcher Feature

Shredder

The shredder contains the following features:

- Main Power Switch- located at the right side of the machine
- Emergency Stop button- activated by pushing it
- Feeder
- Control Panel- contains the following functions:
  - Direction buttons and Stop
  - Power On button
  - Not Ready button
- Dust catcher

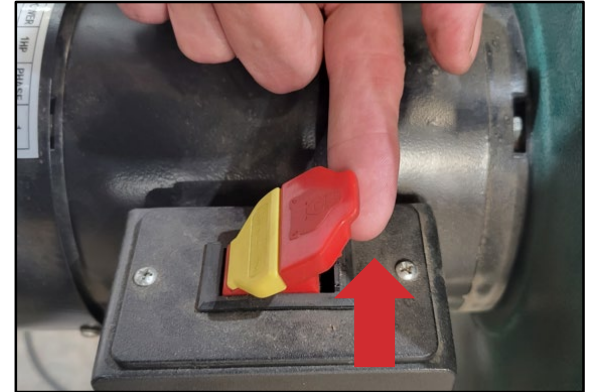
Dust catcher  
Power On/Off  
Switch



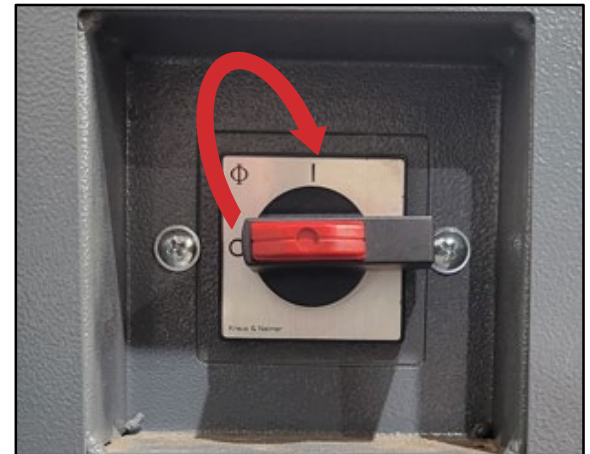
# Shredder Activation Procedures

Shredder

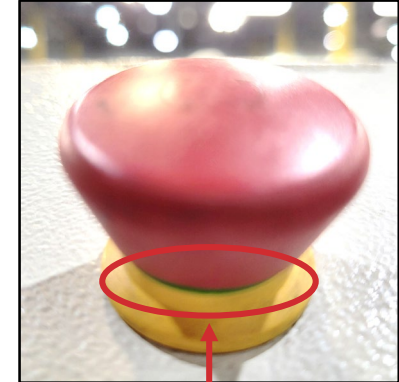
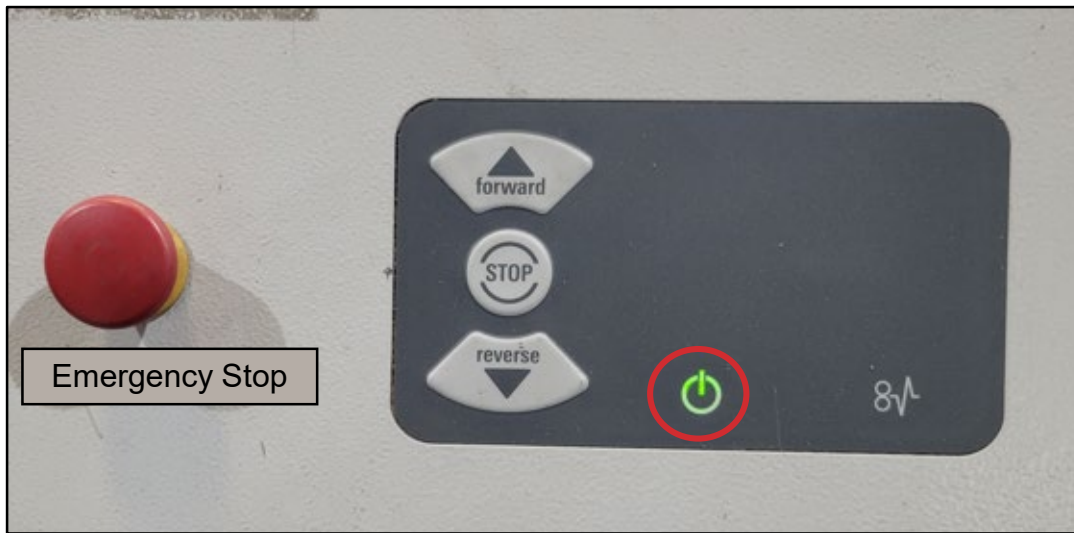
1. Turn on the dust catcher's power switch by lifting the left tab.



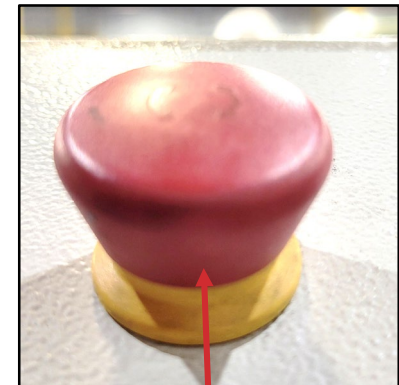
2. Turn the shredder machine on by flipping the main power switch clockwise.



3. Press the power button on the operating panel. If it doesn't turn green, ensure that the Emergency Stop button is released.

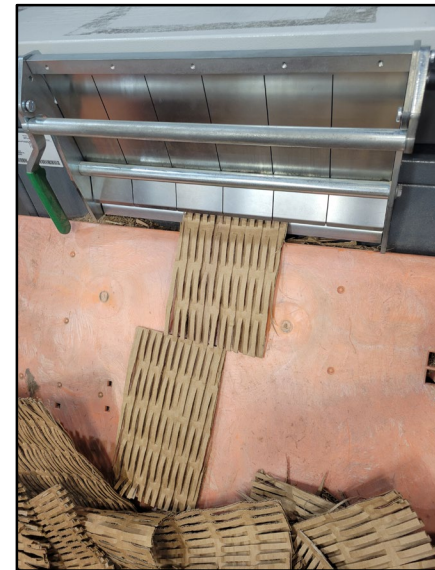


Emergency Stop is released by pulling upward



Emergency Stop is **not** released

1. Insert the cardboard slowly into the shredder.
2. Wait until the cardboard is fully processed by the shredder before introducing more cardboard.
3. Clear the shredded cardboard from the rear of the machine.



1. Ensure all shredded cardboard has exited the machine.
2. Switch off the shredder by flipping the main power switch.
3. Deactivate the dust collector by pushing the on/off switch downward.

